



长安仁恒



# 天然矿物凝胶 · 赋能高端个护配方

Natural Mineral Gel · Empowering Premium Personal Care Formulations

增稠 | 悬浮 | 稳定 | 触变 | 肤感优化

Thickening · Suspension · Stabilization · Thixotropy · Skin Feel Optimization

COS-BC | COS-38

# 行业深耕者

## Industry Specialist

总储量达数百万吨

The total reserves reach millions of tons

原矿充分均化，自然风化

The raw ore is fully homogenized and naturally weathered

## 公司介绍

浙江长安仁恒科技股份有限公司成立于2000年，是一家专注于膨润土流变助剂应用于多领域研发、生产、销售与应用技术服务的矿物流变助剂供应商。

## Company Profile

Zhejiang Changan Renheng Technology Co., Ltd., established in 2000, is a mineral rheological additive supplier focused on the R&D, production, sales, and application technology services of bentonite rheological additives across multiple fields.



65000 平方米

干燥晾晒场

北方天然气候条件

85000 平方米

原土堆放场地

## 全球布局 Global Presence



### 生产中心

河北省张家口市阳原县

### Production Center

Yangyuan County, Zhangjiakou City, Hebei Province

### 销售中心

上海市徐汇区德必世纪 WE

### Shanghai Sales Center

Debi Century WE, Xuhui District, Shanghai

### 支持中心 (总部)

浙江省湖州市长兴泗安经济开发区

### Support Center (Headquarters)

Company Headquarters Si'an Economic Development Zone, Changxing, Huzhou City, Zhejiang Province

### 香港办事处

香港皇后大道中 28 号中汇大厦

### Hong Kong Office

28 Queen's Road Central, Central Plaza, Hong Kong

成都 Chengdu

东莞 Dongguan

长兴 Changxing

阳原 Yangyuan

# 稀有原矿 Rare raw ore

品质优异  
Excellent quality

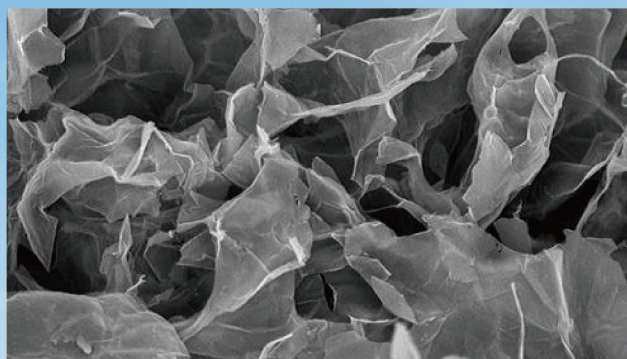
▶ 白度高  
High whiteness



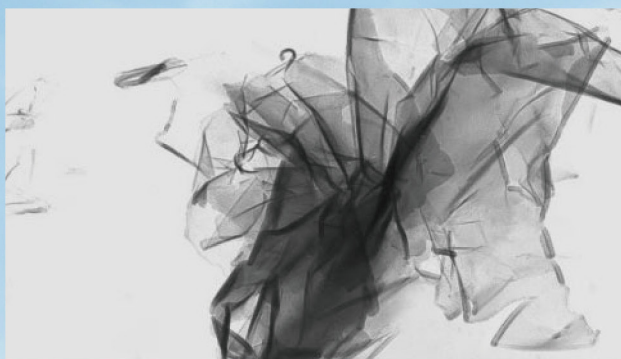
▶ 蒙脱石含量高  
High content of montmorillonite



▶ 比较面积大  
Comparatively large area



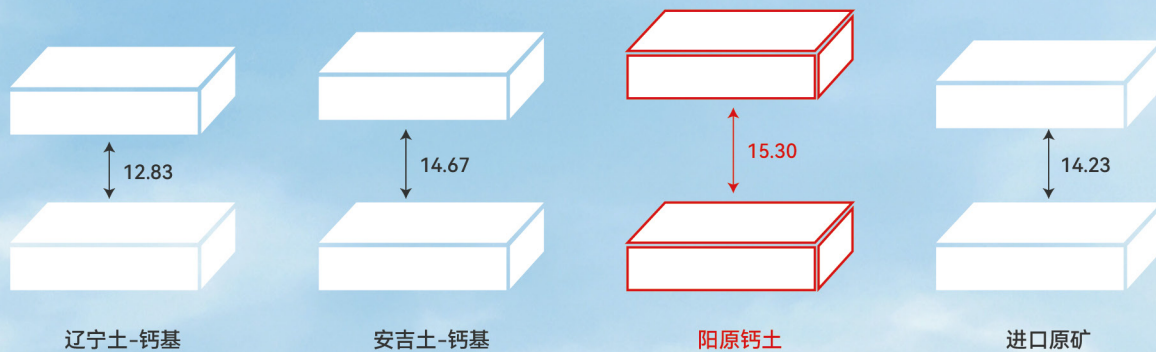
43.9 m<sup>2</sup>/g (长安仁恒)



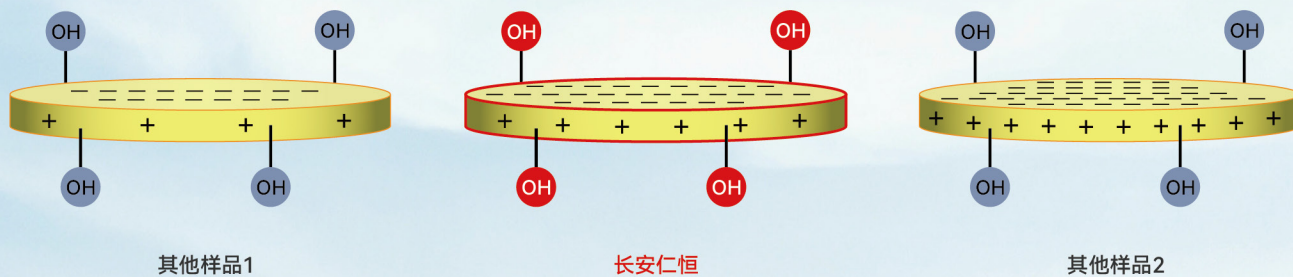
其他



▶ 微观层间距大  
Large micro layer spacing



▶ 电荷分布均匀且密集  
Uniform and dense charge distribution





# 行业创新者

Industry Innovator

## 零碳赋能

Zero-Carbon Empowerment



A/ 公司通过河北省绿色矿山、绿色工厂评审

B/ 通过 SGS 的 TFS(Together for Sustainability) 评审

C/ 全面利用风光清洁能源

为客户提供绿色零碳的膨润土流变助剂  
助力产业绿色化发展。

**We provide our customers with green, zero-carbon bentonite rheological additives, promoting the green development of the industry.**

A/ Our company has passed the Green Mine and Green Factory assessments in Hebei Province.

B/ Has passed the SGS TFS (Together for Sustainability) assessment.

C/ Fully utilize wind and solar clean energy



# 天然矿物产品

## 赋能高端个护配方

Natural Mineral Gel

Empowering Premium Personal  
Care Formulations

### COS-38 ▶

油相专用超易分散有机膨润土

Ultra-Easy Dispersing Organoclay for Oil-Based Systems



COS-38 是专为日化油相体系研发的超易分散型有机膨润土，采用优质高纯度精细蒙脱土经专业有机改性精制而成。产品在各类油脂体系中分散快捷、不结团，可赋予体系优异的增稠稳定、悬浮防沉、触变调节与结构支撑性能，同时兼顾良好流动性与储存稳定性，有效提升彩妆、膏霜、油基护理品等产品的质感与稳定性，是日化油相体系的理想流变助剂。

COS-38 is an ultra-easy dispersing organoclay specially developed for cosmetic oil-phase systems. It is produced from high-purity refined montmorillonite through professional organic modification.

The product disperses rapidly in a wide range of oil systems without agglomeration, providing excellent thickening stability, suspension performance, anti-settling properties, thixotropic control, and structural support. At the same time, it maintains good flowability and storage stability.

COS-38 effectively enhances the texture, stability, and overall performance of cosmetic formulations such as color cosmetics, creams, and oil-based personal care products, making it an ideal rheology modifier for oil-phase cosmetic systems.

# 天然矿物凝胶

## 赋能高端个护配方

Natural Mineral Gel

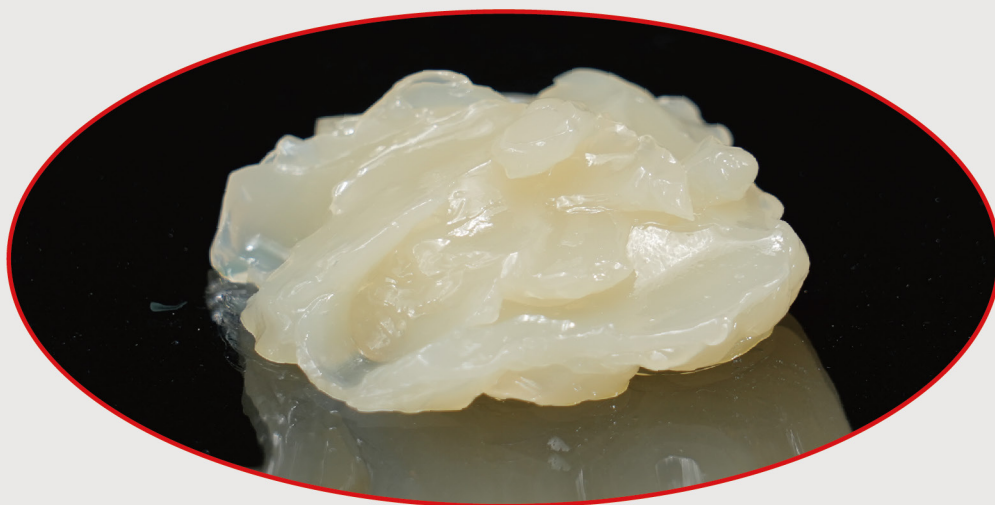
Empowering Premium Personal  
Care Formulations

### COS-38 ▶

凝胶（油相专用）



Oil-Phase Organoclay Gel



此图为 COS 38 有机膨润土凝胶。作为专为日化油相体系设计的功能凝胶，它分散便捷、易活化、成型稳定，可高效为彩妆、膏霜及油基护肤品提供精准流变调控、悬浮稳定与结构支撑，有效防止粉体与功效成分沉降，让活性物质在皮肤表面均匀铺展、附着更温和，同时提升产品质感、延展性与储存稳定性，打造顺滑细腻的高端油基日化产品。

This image shows the COS-38 organoclay gel. As a functional gel specifically designed for oil-phase cosmetic systems, it features easy dispersion, rapid activation, and stable gel formation.

It provides efficient rheological control, suspension stabilization, and structural reinforcement for formulations such as color cosmetics, creams, and oil-based skincare products. It effectively prevents sedimentation of pigments and active ingredients, ensuring uniform distribution on the skin.

Meanwhile, it enhances product texture, spreadability, and storage stability, helping formulators create smooth, refined, and high-performance oil-based cosmetic products.

# 天然矿物产品

## 赋能高端个护配方

Natural Mineral Gel

Empowering Premium Personal

Care Formulations

### COS-BC ▶

水相专用超易分散无机膨润土



Ultra-Easy Dispersing Inorganic Bentonite for Water-Based Systems



COS-BC 是经特殊工艺深度钠化、提纯、活化的高纯度天然铝镁硅酸盐亲水型膨润土，专为日化水相体系设计。产品无毒无味、温和无添加，在水中亲水性强、易分散、水化快、胶体结构稳定，具备优异的触变性、增稠性、悬浮性与热稳定性，可显著改善水基日化产品的肤感、稠度与长期储存稳定性，广泛适用于洗护、面膜、牙膏等水相日化体系。

COS-BC is a high-purity natural hydrophilic bentonite (aluminum magnesium silicate) processed through specialized sodium activation, purification, and activation technologies. It is specifically designed for water-phase cosmetic formulations. The product is odorless, non-toxic, and gentle, with strong hydrophilicity. It disperses easily in water, hydrates rapidly, and forms a stable colloidal structure. COS-BC provides excellent thixotropy, thickening ability, suspension performance, and thermal stability. It significantly improves skin feel, viscosity, and long-term stability in water-based cosmetic products, and is widely used in applications such as shampoos, facial masks, toothpaste, and other aqueous personal care systems.

# 天然矿物凝胶

## 赋能高端个护配方

Natural Mineral Gel

Empowering Premium Personal  
Care Formulations

### COS-BC ▶

凝胶（水相专用）



Hydrophilic Bentonite Gel for Water-Based Systems



此图为 COS-BC 亲水型膨润土凝胶。它能为个人护理品水相体系赋予优异的触变粘度与结构稳定性，即便在低粘度体系中，仍具备出色的悬浮能力与长效稳定效果。可赋予配方细腻丝滑、清爽不粘腻的优质肤感，改善传统高分子增稠剂带来的黏腻感，在洁面、洗护等清洁体系中相容性佳，协同提升使用体验，是水相日化配方的理想天然流变助剂。

This image shows the COS-BC hydrophilic bentonite gel. It provides excellent thixotropic viscosity and structural stability for water-phase personal care formulations. Even in low-viscosity systems, it delivers outstanding suspension capability and long-term stability. It helps formulations achieve a smooth, silky skin feel with a refreshing, non-sticky texture. Compared with conventional polymer thickeners, COS-BC improves sensory performance and reduces unwanted stickiness. It shows excellent compatibility in cleansing systems such as facial cleansers and hair care products, enhancing the overall user experience. COS-BC is an ideal natural rheology modifier for water-based personal care formulations.



#### 公司总部

浙江省湖州市长兴泗安经济开发区  
Company Headquarters Si'an Economic Development Zone,  
Changxing, Huzhou City, Zhejiang Province  
T: 0572-6822758 F: 0572-6822137

#### 上海销售中心

上海市徐汇区浦北路6号德必世纪WE305室  
Room 305, Debi Century WE305, No.6 PubeiRoad,Xuhui District,  
Shanghai  
T: 021-2356 0890 F: 021-2356 0891

#### 香港办事处

香港皇后大道中28号中汇大厦四楼、五楼  
Hong Kong Office 4th and 5th floors of Zhonghui Building 28  
Queen's Road Central, Hong Kong